

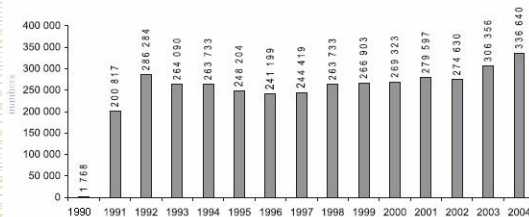
BUSINESS INCUBATORS In Slovak Republic

The role of SME sector

- W Development factors of business environment
 - establishment of a suitable business environment,
 - more transparent legislation,
 - reduction of administrative and tax burden,
 - reduction of contributions to funds,
 - support of the infrastructure development,
 - easier access to capital.
- W From transition till now
 - SMEs represent 99,8 % of all companies,
 - their share of total employment exceeds 65 %
 - SMEs represent about two thirds of the Slovak economy

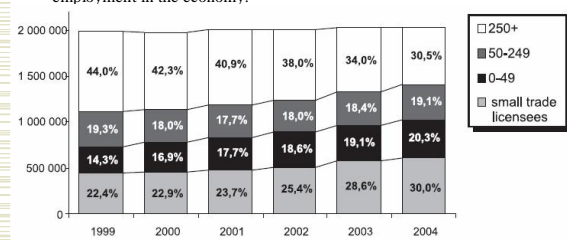
Development of SMEs in Slovakia – number of self-employed person

- W Two important facts:
 1. relatively long period of 40 years of communism
 2. Possibility for independent private business activities



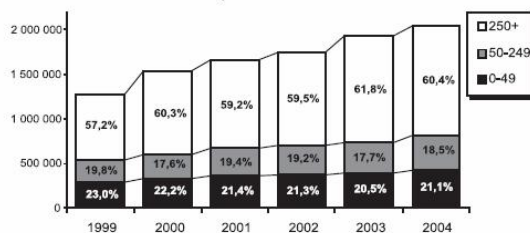
Development of SMEs in Slovakia – employment

- W One of the most positive facts that illustrate SMEs growing importance is its increasing share of total employment. The share of SMEs on total employment is still growing and today is equal almost 66 % of total employment in the economy.



Development of SMEs in Slovakia – GDP

- W Importance of SMEs is its share of gross production. The contributions by small and medium enterprises did not changed pronouncedly. The greatest share on gross production has large companies.



NADSME

- W was based on appointment of the Ministry of Economy from 1993
- W Co-operation in the implementation of the state policy of SME support and development
- W Activities to improve SME support efficiency
- W Co-operation with institutions associating entrepreneurs
- W Information activities
- W Monitoring of the business environment
- W Buildings of business incubators

Business incubators

- W Provide starting entrepreneurs with suitable starting conditions for the operation of their enterprise during approximately 3 years.
- W Business incubators offer starting entrepreneurs:
 - business space (including the office infrastructure)
 - complex services (administrative services, expert counselling etc.)
 - eventually a starting capital
- W At the present, there is a network of 4 business and 5 technological incubators in place in the territory of Slovakia, which support newly established small enterprises with the respective regions requirement (Bratislava, Martin, Banská Bystrica, Košice, Spišská Nová Ves, Rožňava, Prešov, Malacky and Prievidza).